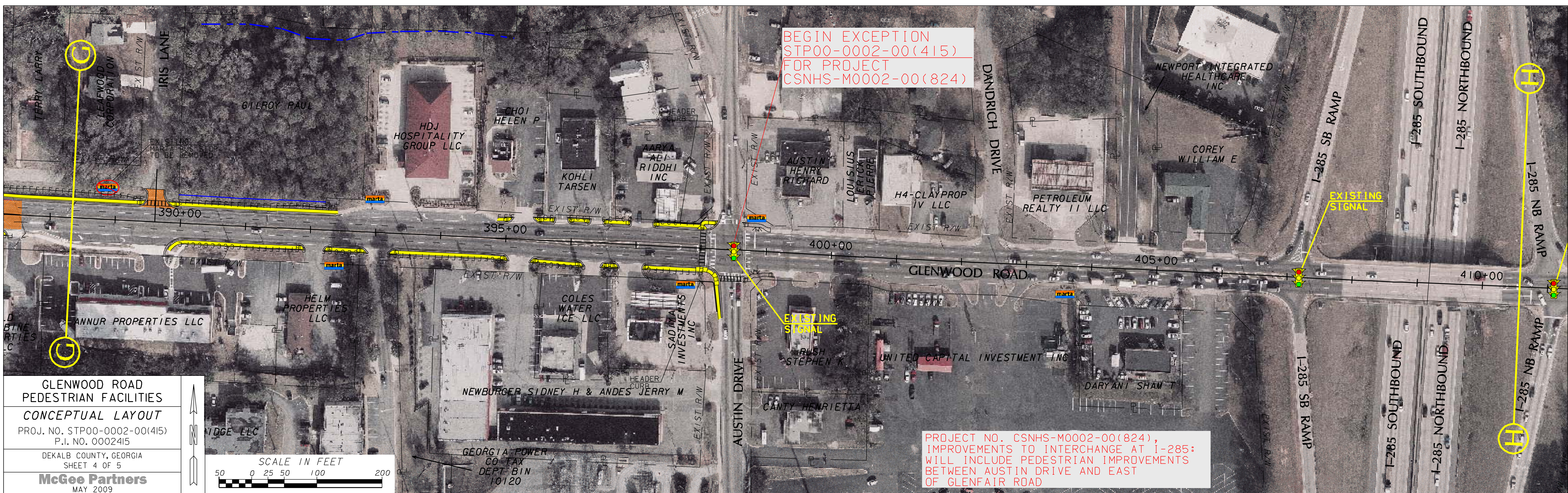


CINDY DRIVE TO I-285



GLENWOOD ROAD
PEDESTRIAN FACILITIES
CONCEPTUAL LAYOUT
PROJ. NO. STP00-0002-00(415)
P.I. NO. 0002415
DEKALB COUNTY, GEORGIA
SHEET 4 OF 5
McGee Partners
MAY 2009



PROJECT NO. CSNHS-M0002-00(824),
IMPROVEMENTS TO INTERCHANGE AT I-285:
WILL INCLUDE PEDESTRIAN IMPROVEMENTS
BETWEEN AUSTIN DRIVE AND EAST
OF GLENFAIR ROAD